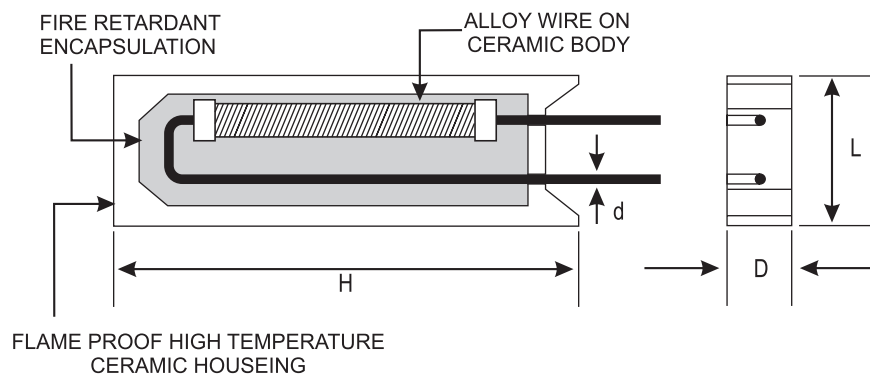


WIRE WOUND RESISTORS - CERAMIC ENCASED BOAT, VERTICAL MOUNTING

INTRODUCTION:

The WWV series resistors are wire wound resistors encased in ceramic boat with leads set for vertical mounting.

WWV series offer a wide range of resistors in the range 100mΩ to 10KΩ, with power ratings 1W to 10W.



SPECIFICATIONS

Type	Wattage	Dimensions in mm				Range in Ohms [Ω]		Tolerance
		D	L	H	d			
WWV 1	1	3.2	9	28	0.60 ± 0.02	0.1	470	5%
WWV 2	2	4.25	11	28	0.65 ± 0.02	0.1	680	5%
WWV 3	3	5	15	28	0.75 ± 0.05	0.1	1K	5%
WWV 4	4	5	15	28	0.75 ± 0.05	0.1	1K	5%
WWV 5	5	6	17	33	0.75 ± 0.05	0.1	3K3	5%
WWV 7	7	8	25	38	0.80 ± 0.05	0.1	10K	5%
WWV 10	10	8	30	38	0.80 ± 0.05	0.1	10K	5%

ELECTRICAL PERFORMANCE

Tests	Condition	Spec.
Resistance Temp. Coeff.	-55°C ~ 200°C	± 200 ppm/°C
Short Time Overload	5 times of rated wattage for 5 sec for upto 3w 10 times of rated wattage for 5 sec. above 3w	± 2%
Rated Load	Rated voltage for 30 min.	± 0.5%
Insulation Resistance	500 V megger	1,000 MΩ
Load Life	70°C on-off cycle 1,000hrs.	± 3%